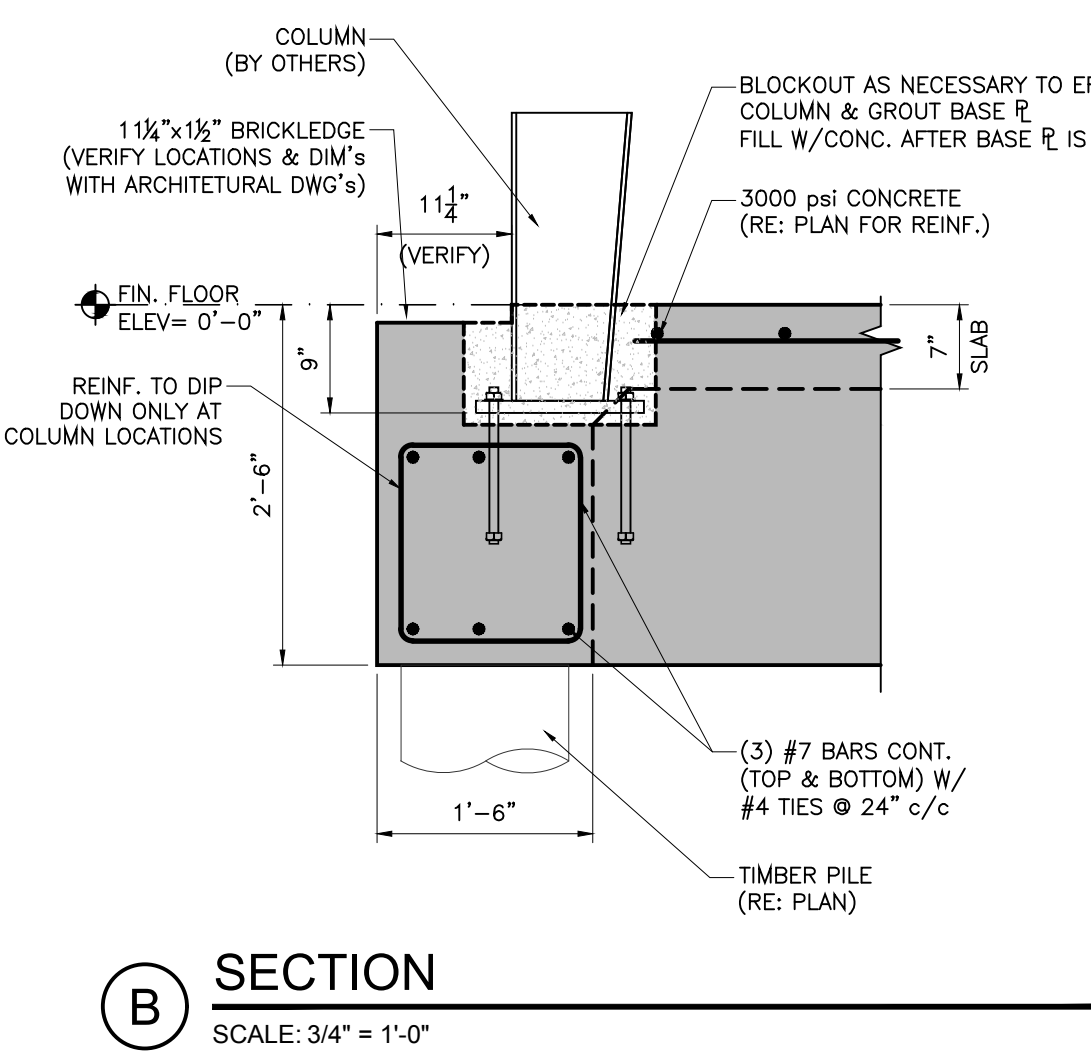
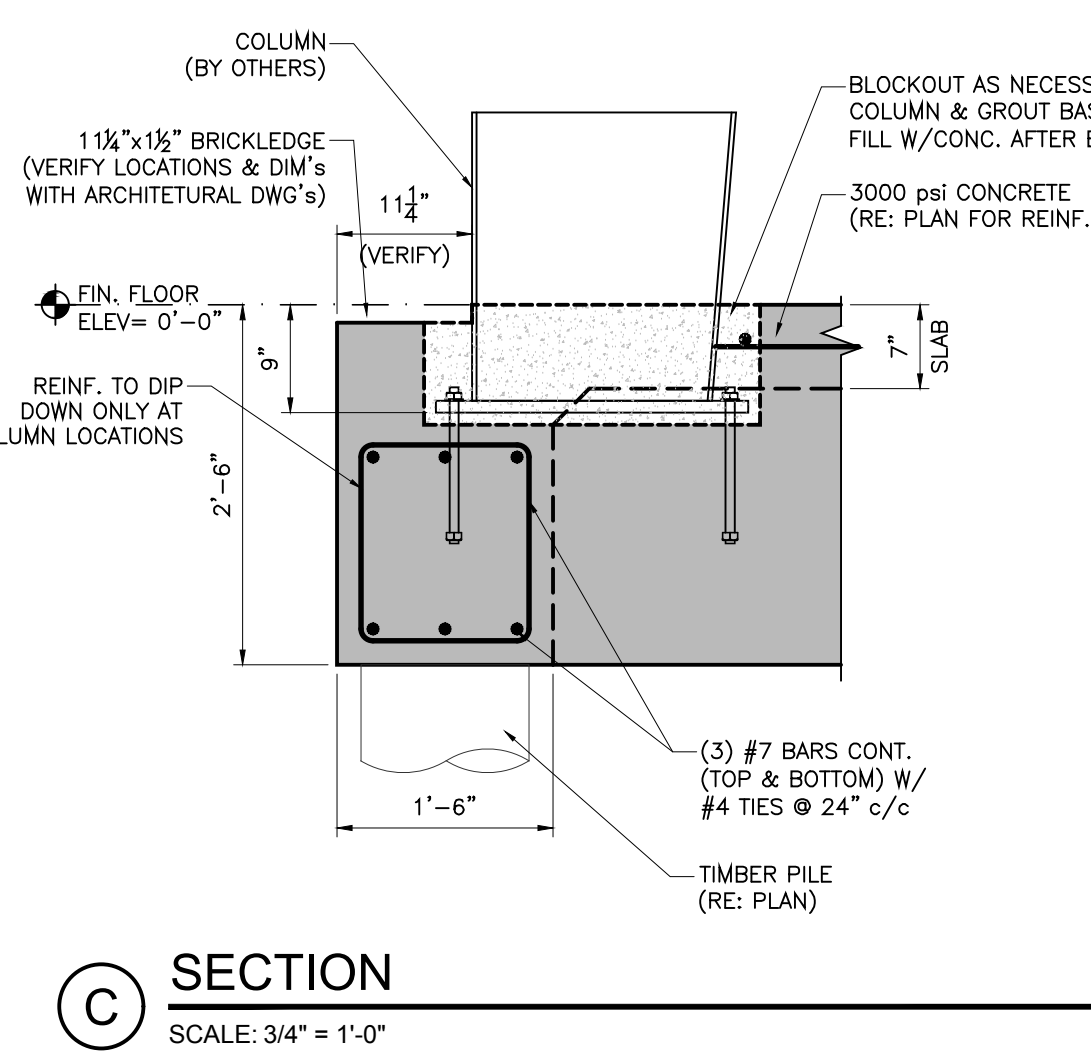


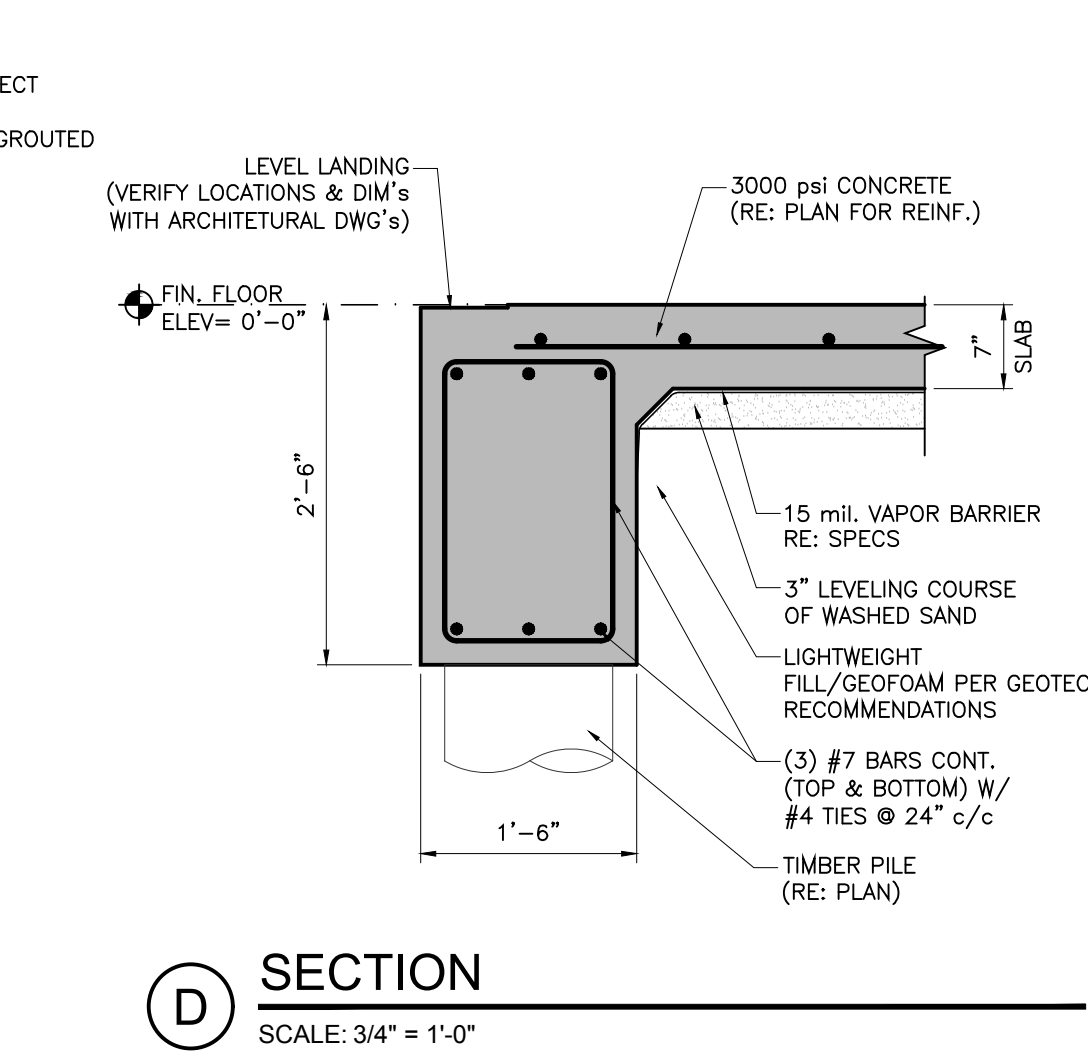
A SECTION
SCALE: 3/4" = 1'-0"



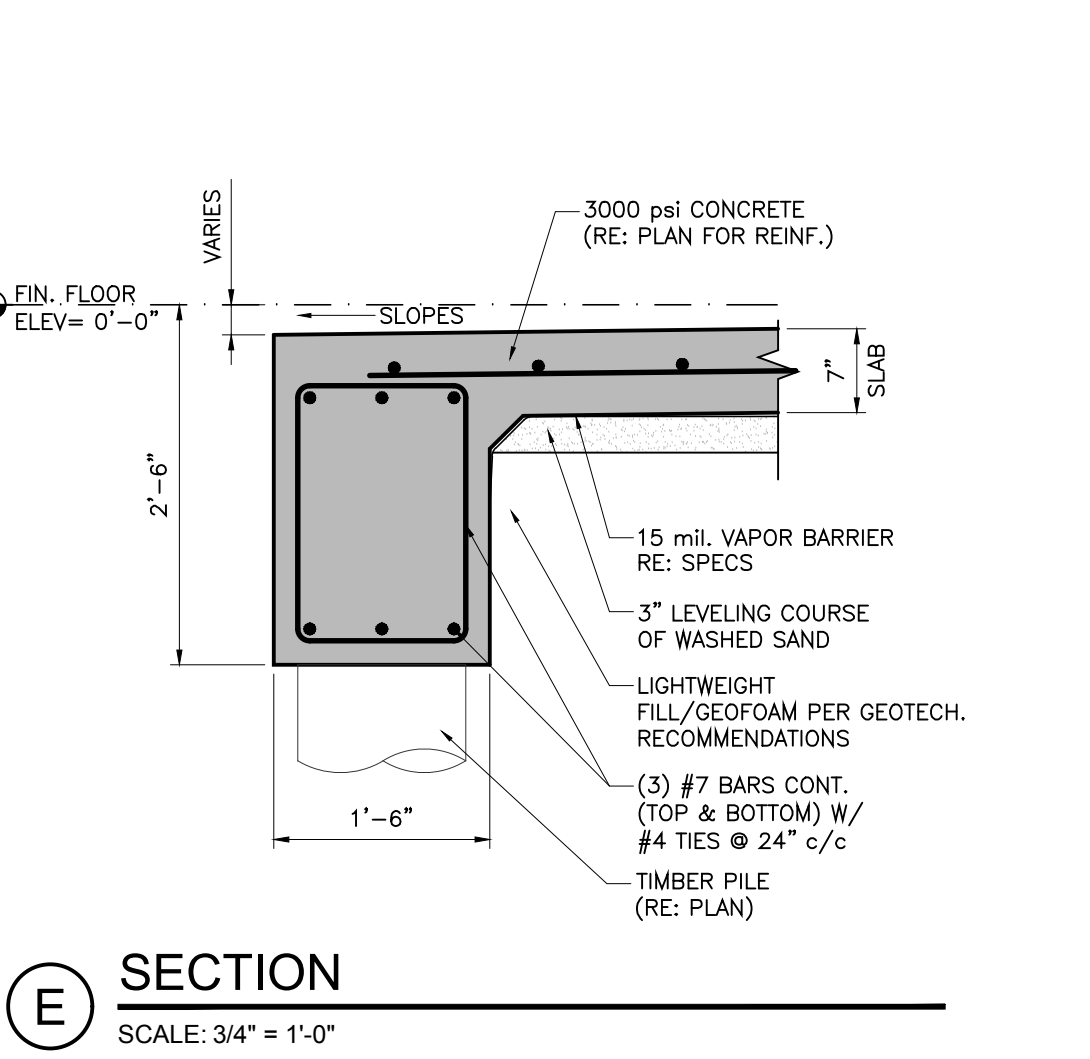
B SECTION
SCALE: 3/4" = 1'-0"



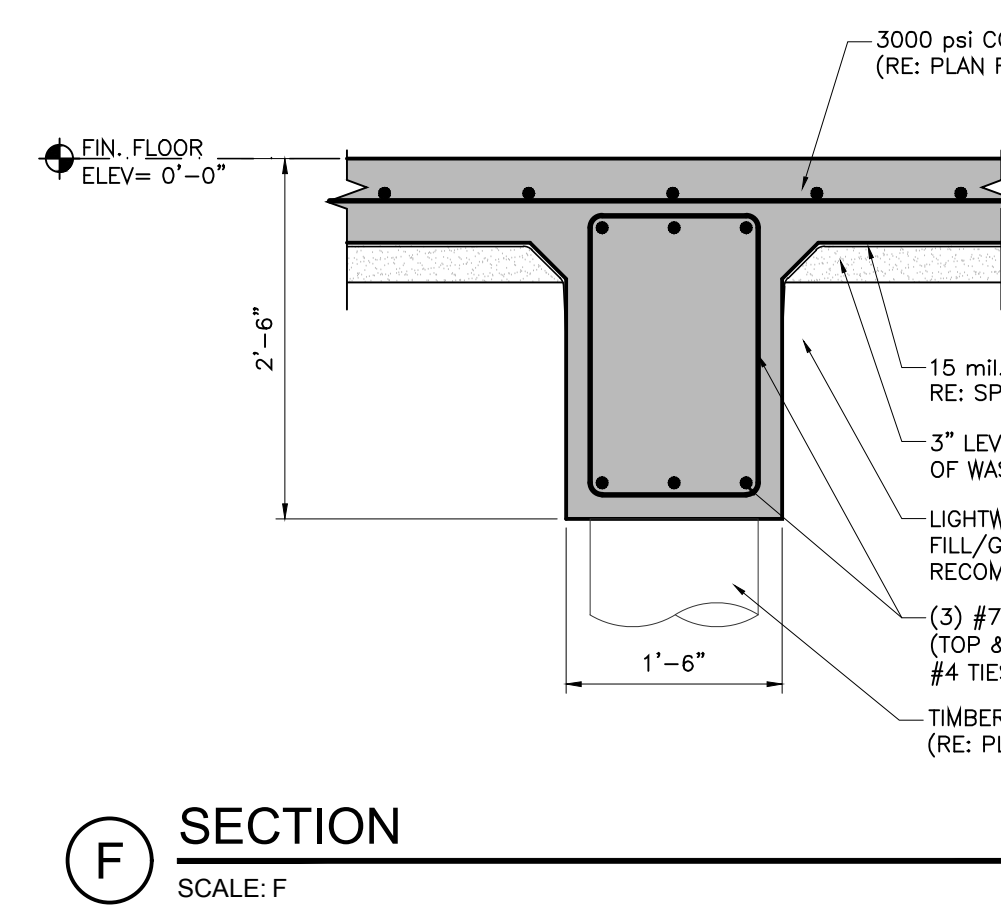
C SECTION
SCALE: 3/4" = 1'-0"



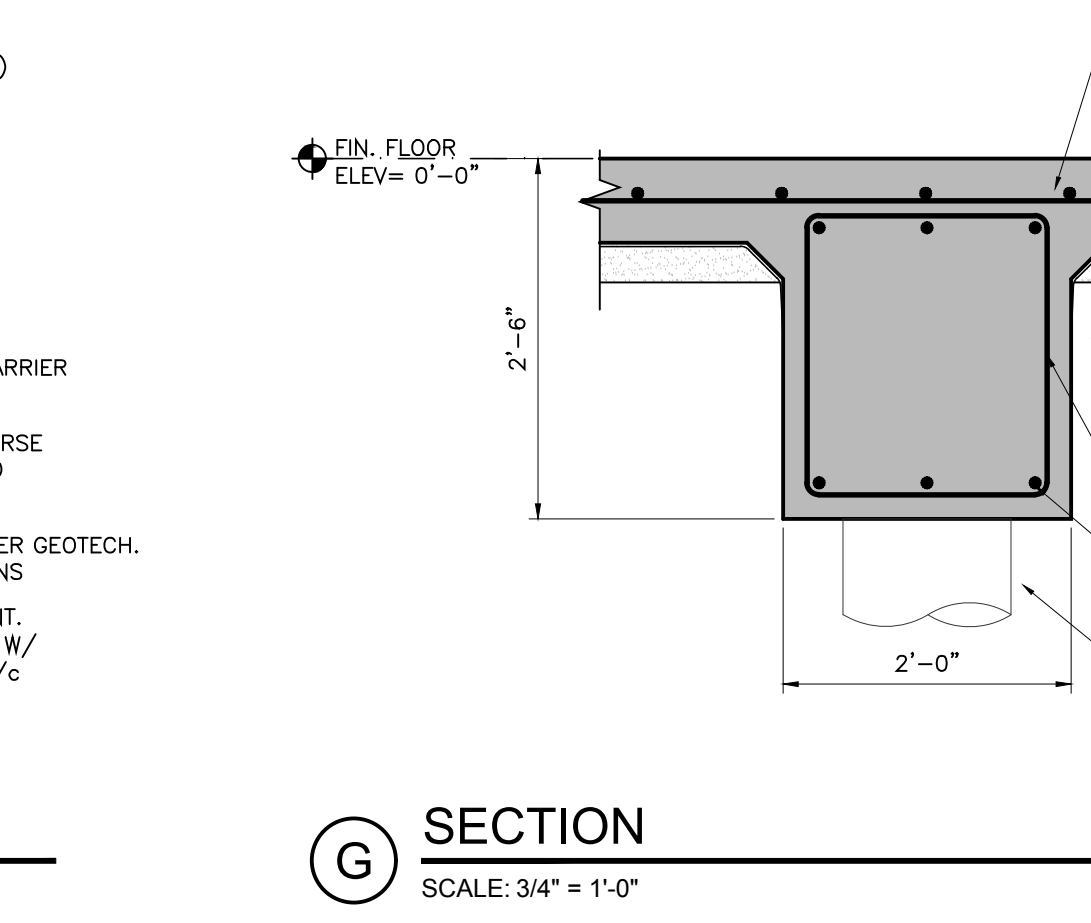
D SECTION
SCALE: 3/4" = 1'-0"



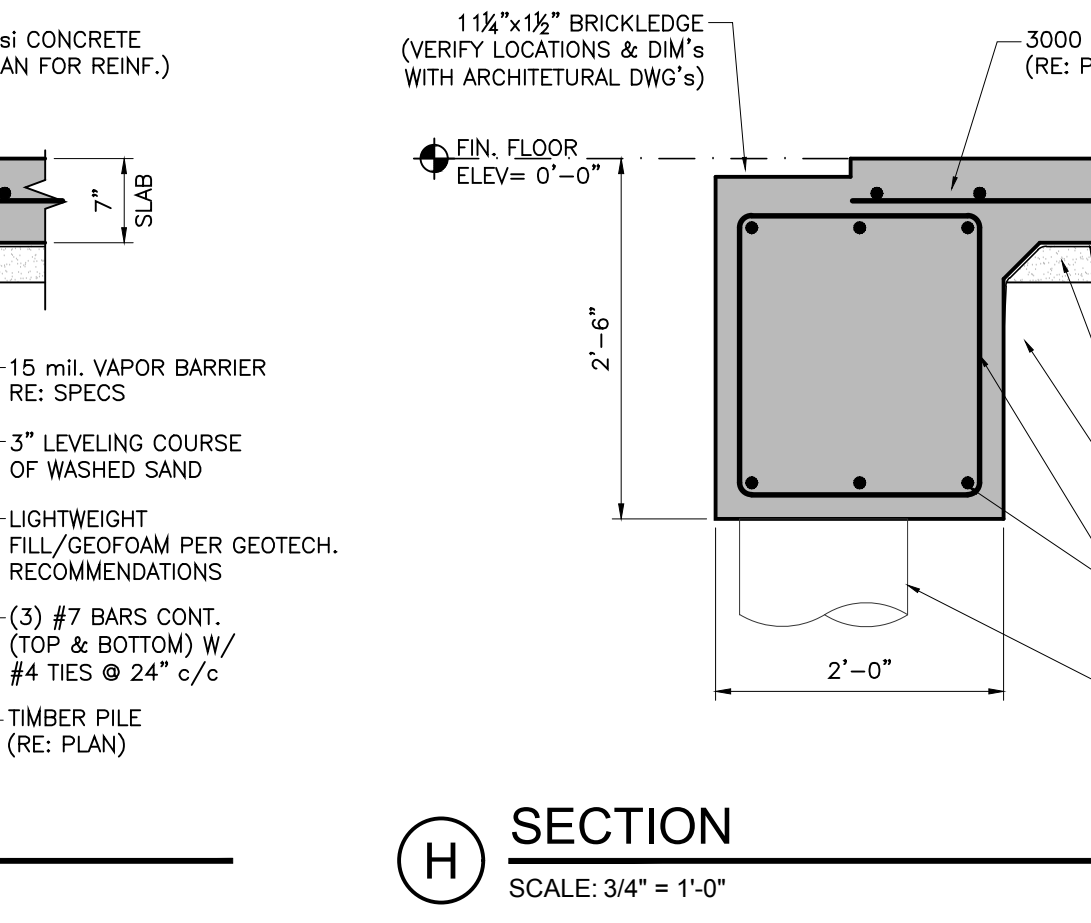
E SECTION
SCALE: 3/4" = 1'-0"



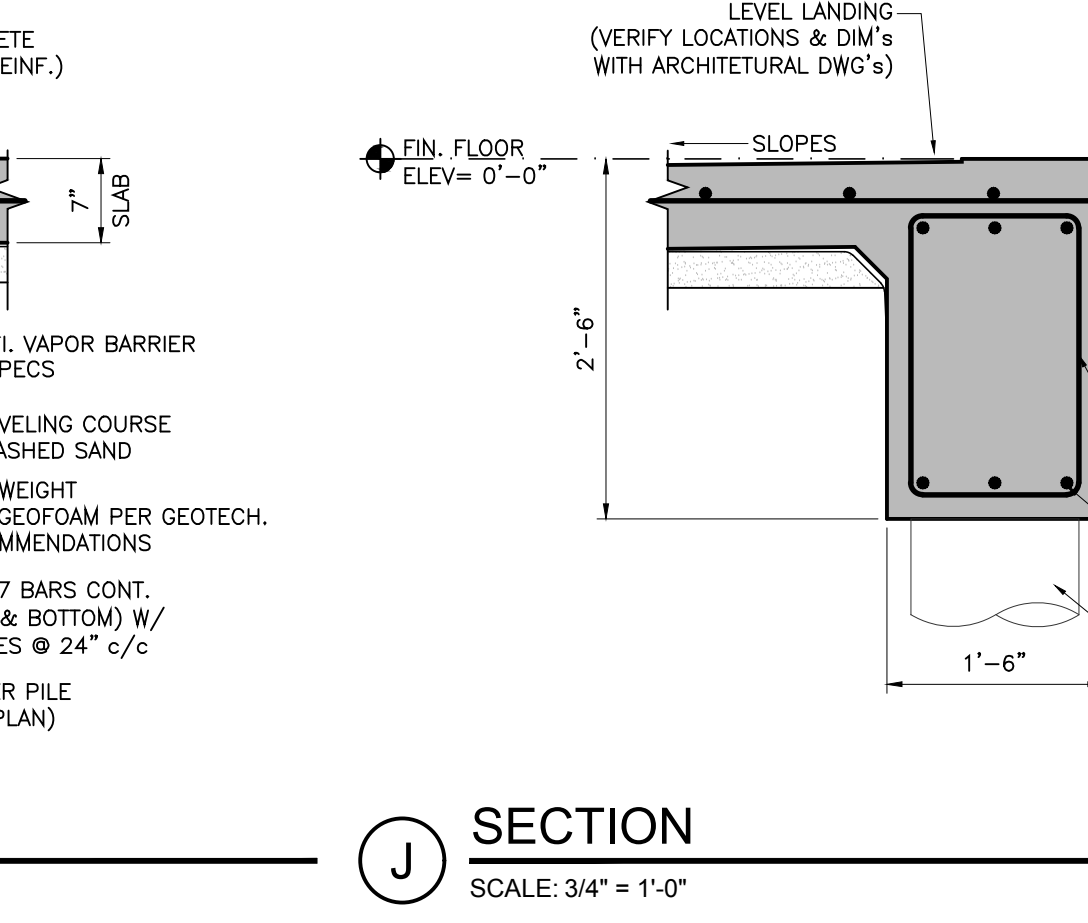
F SECTION
SCALE: F



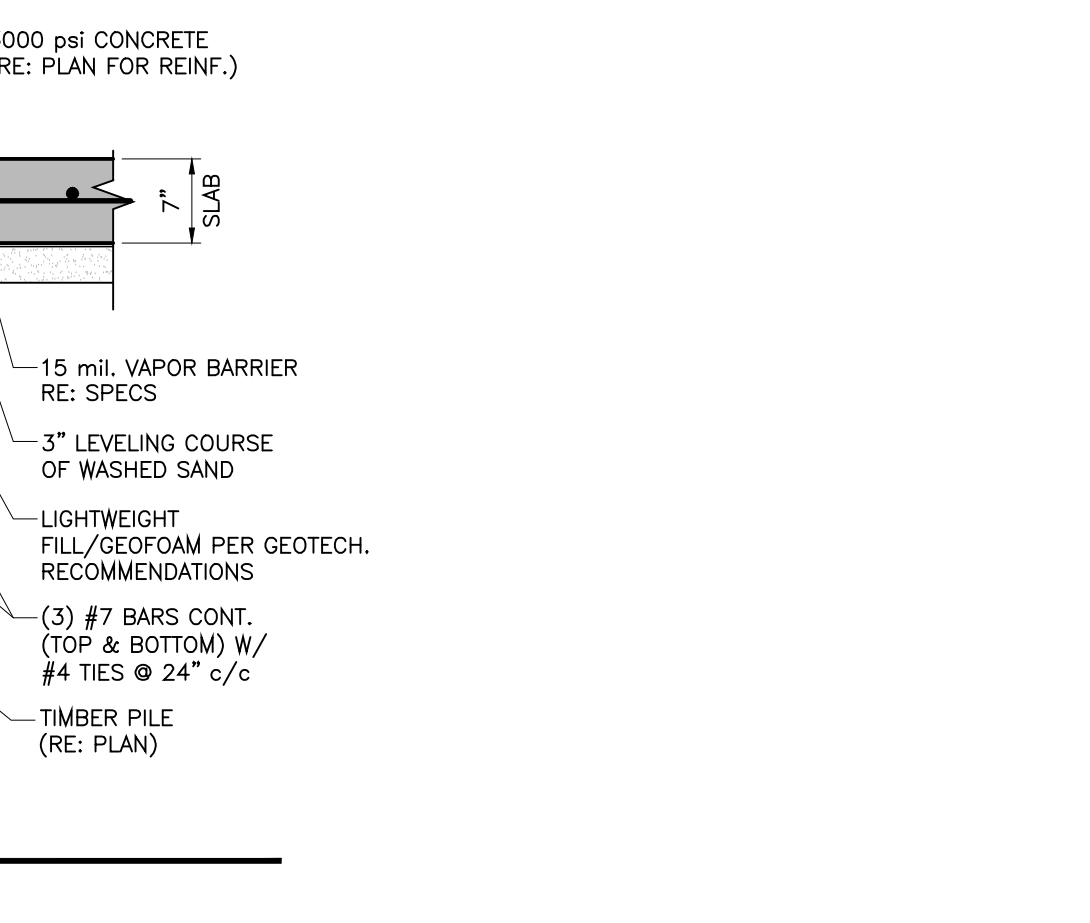
G SECTION
SCALE: 3/4" = 1'-0"



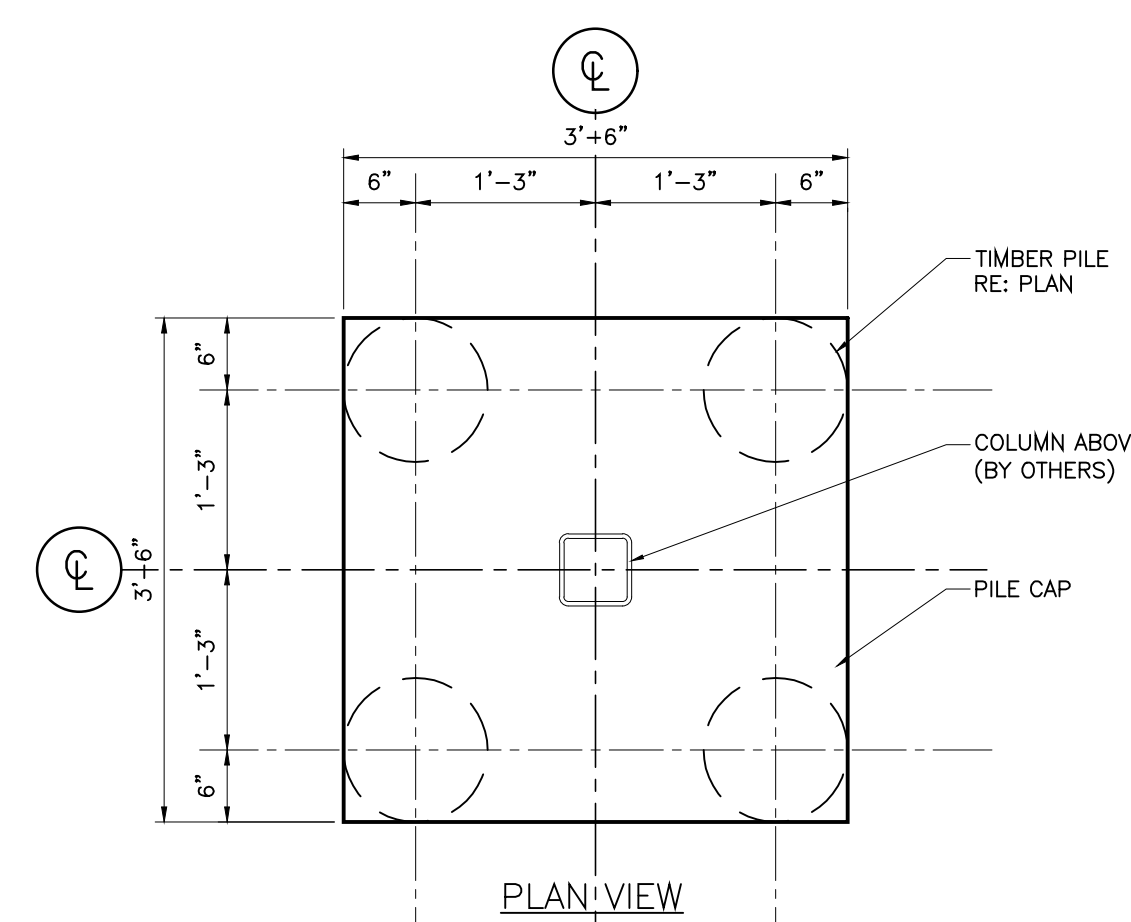
H SECTION
SCALE: 3/4" = 1'-0"



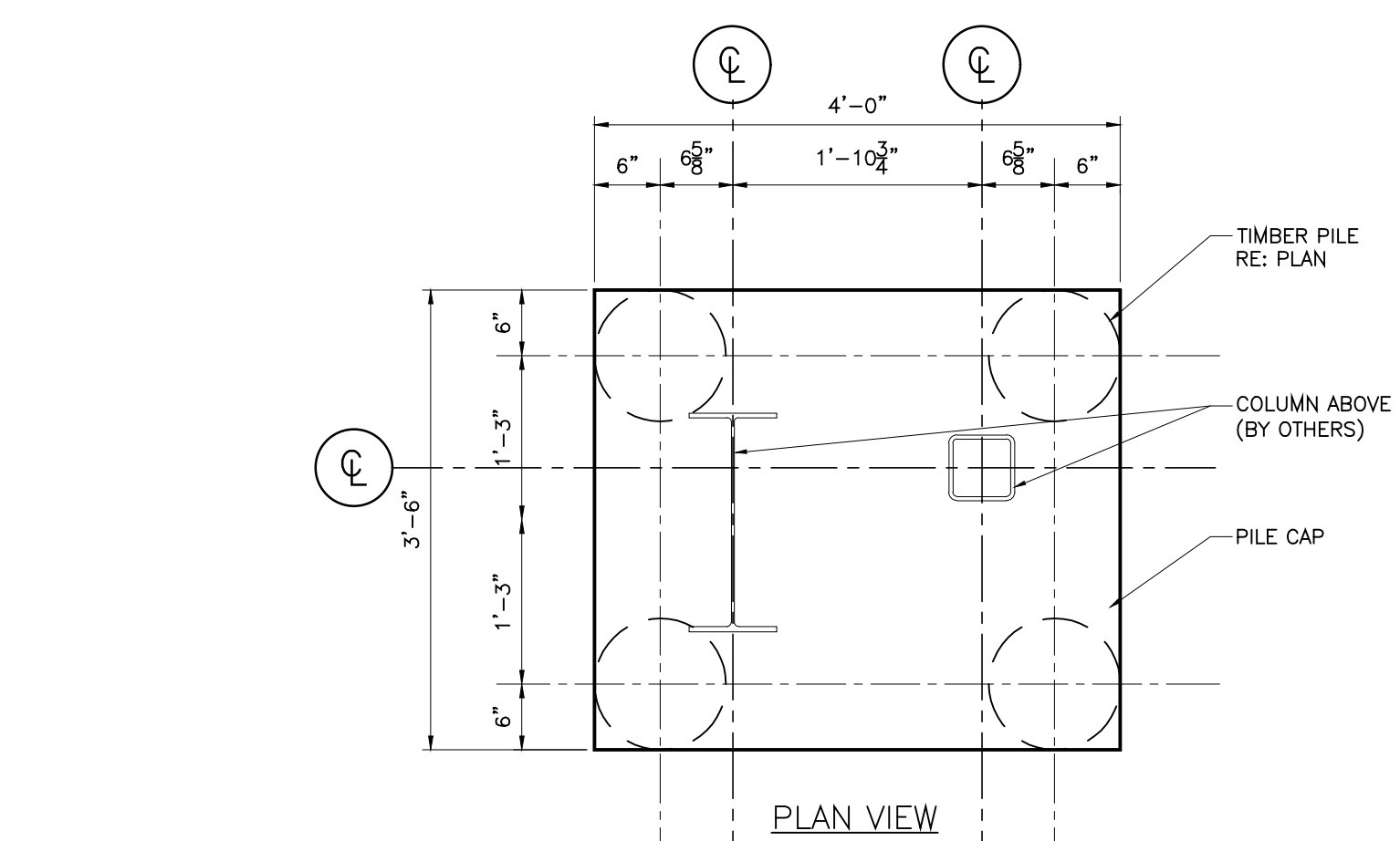
I SECTION
SCALE: 3/4" = 1'-0"



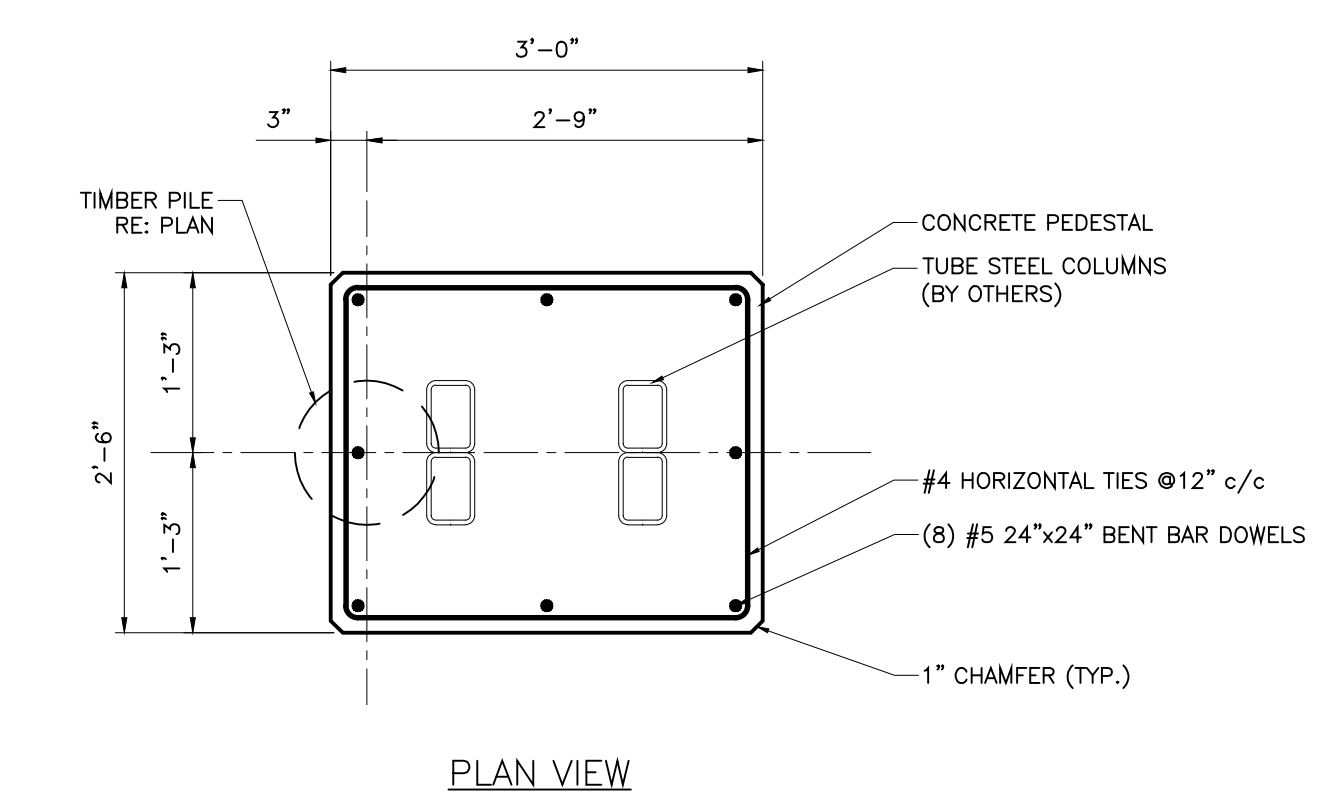
J SECTION
SCALE: 3/4" = 1'-0"



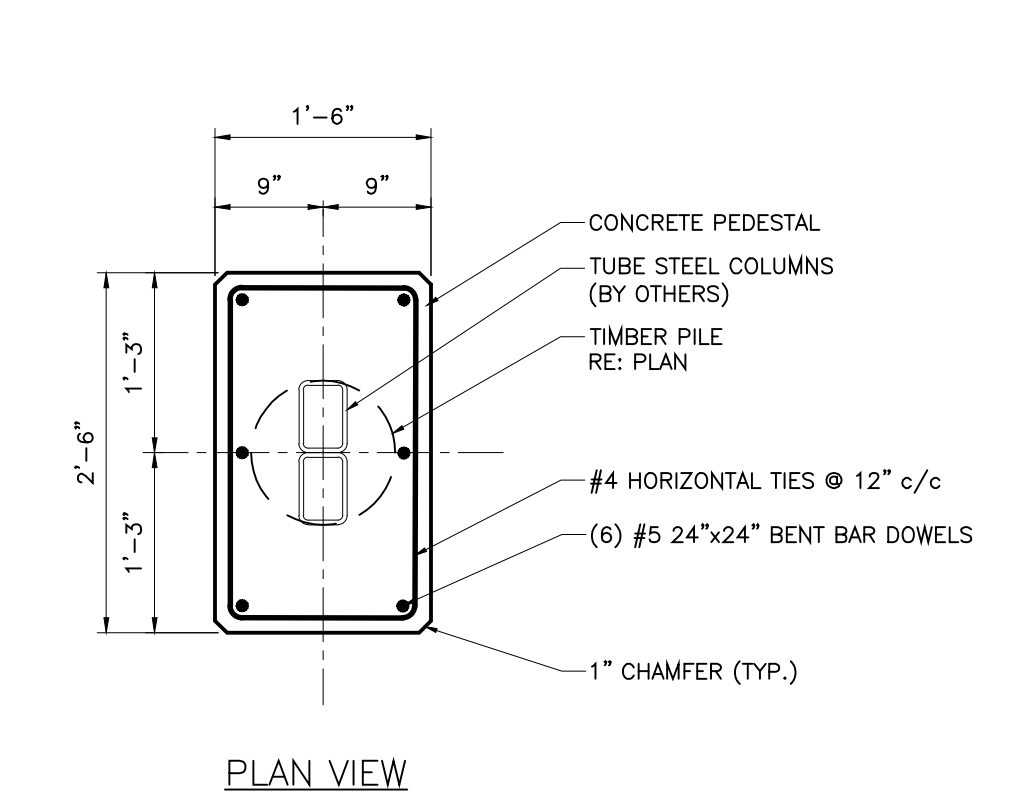
1 PILE CAP TYPE 1 DETAIL
SCALE: 3/4" = 1'-0"



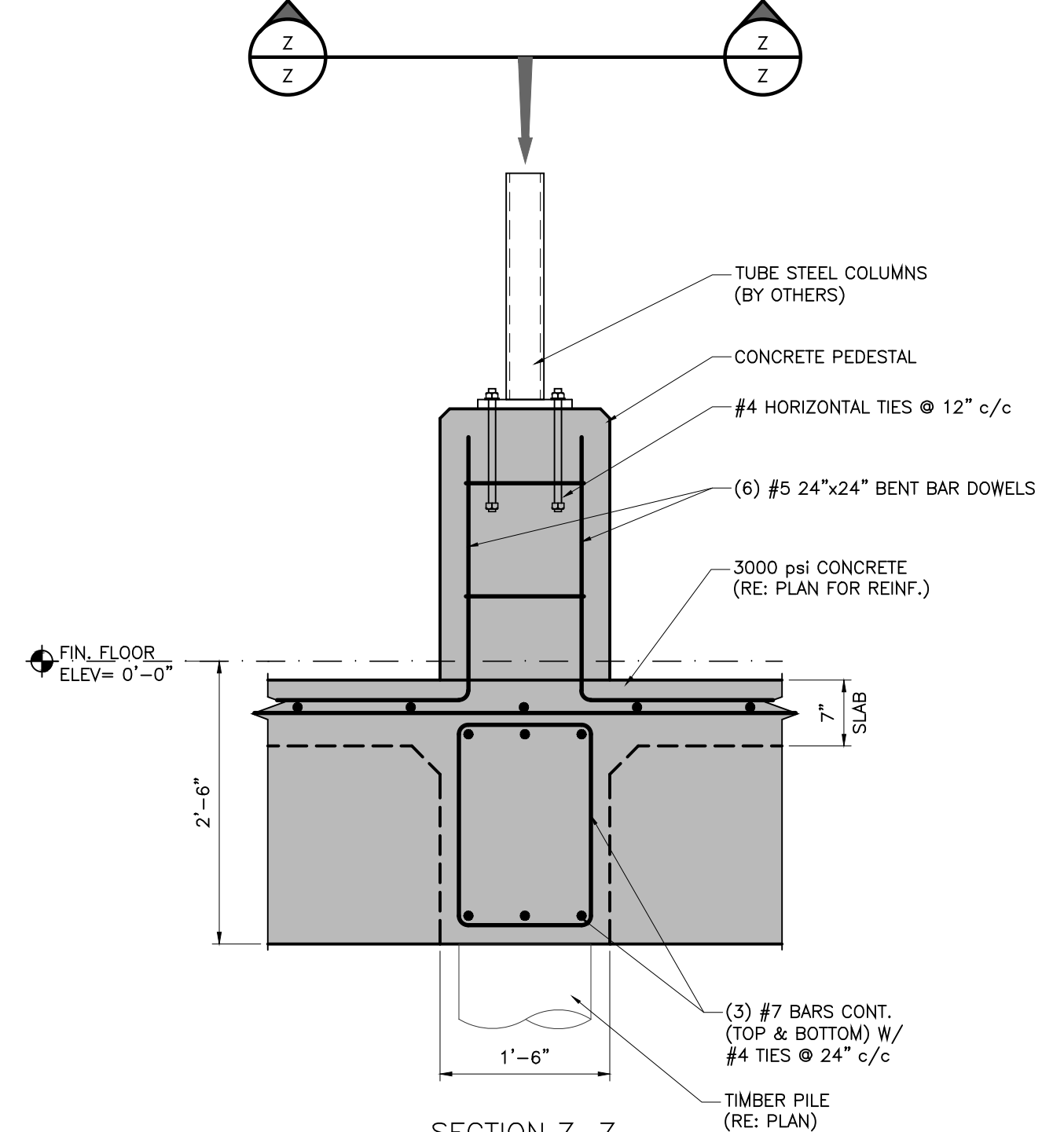
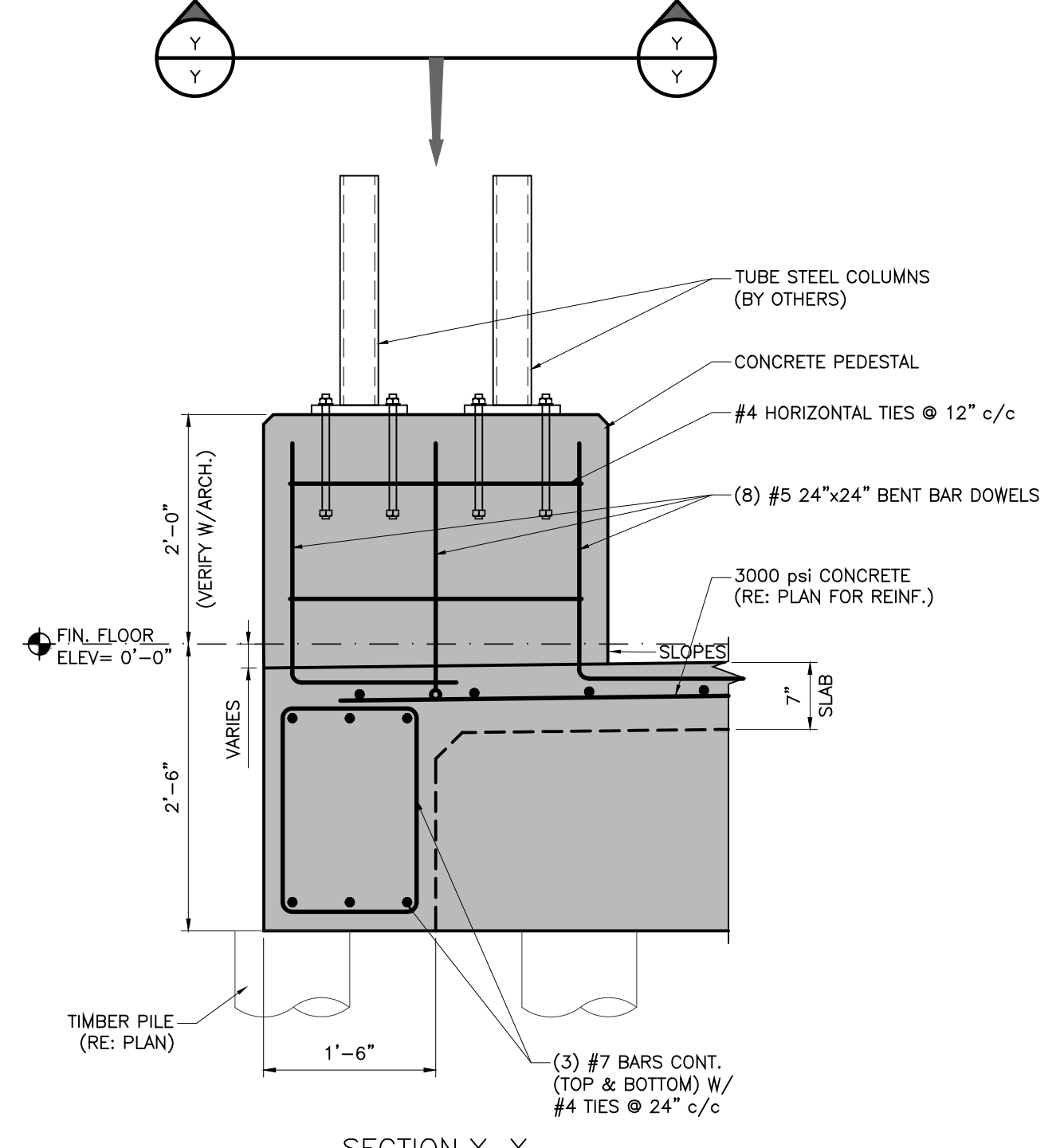
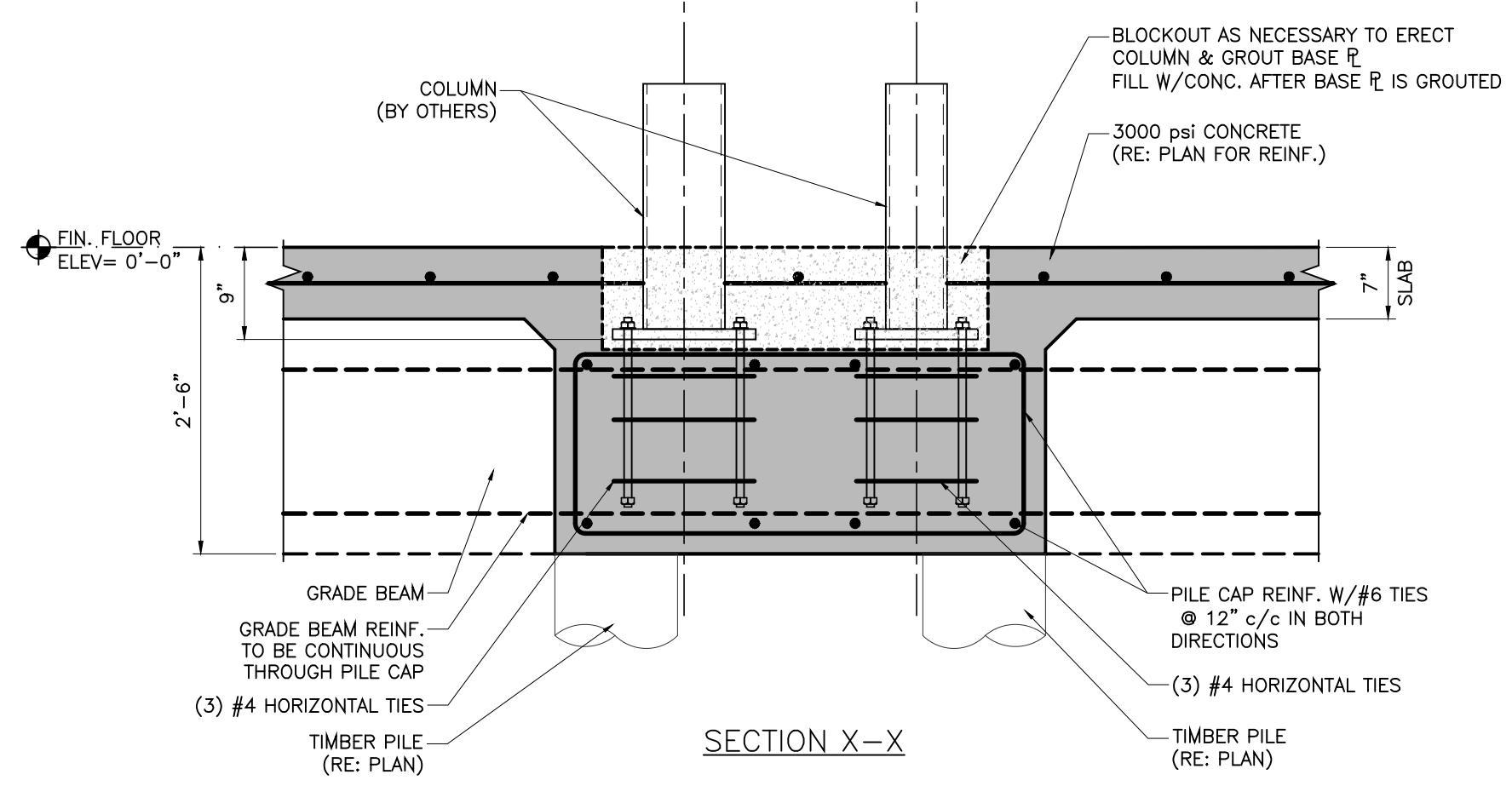
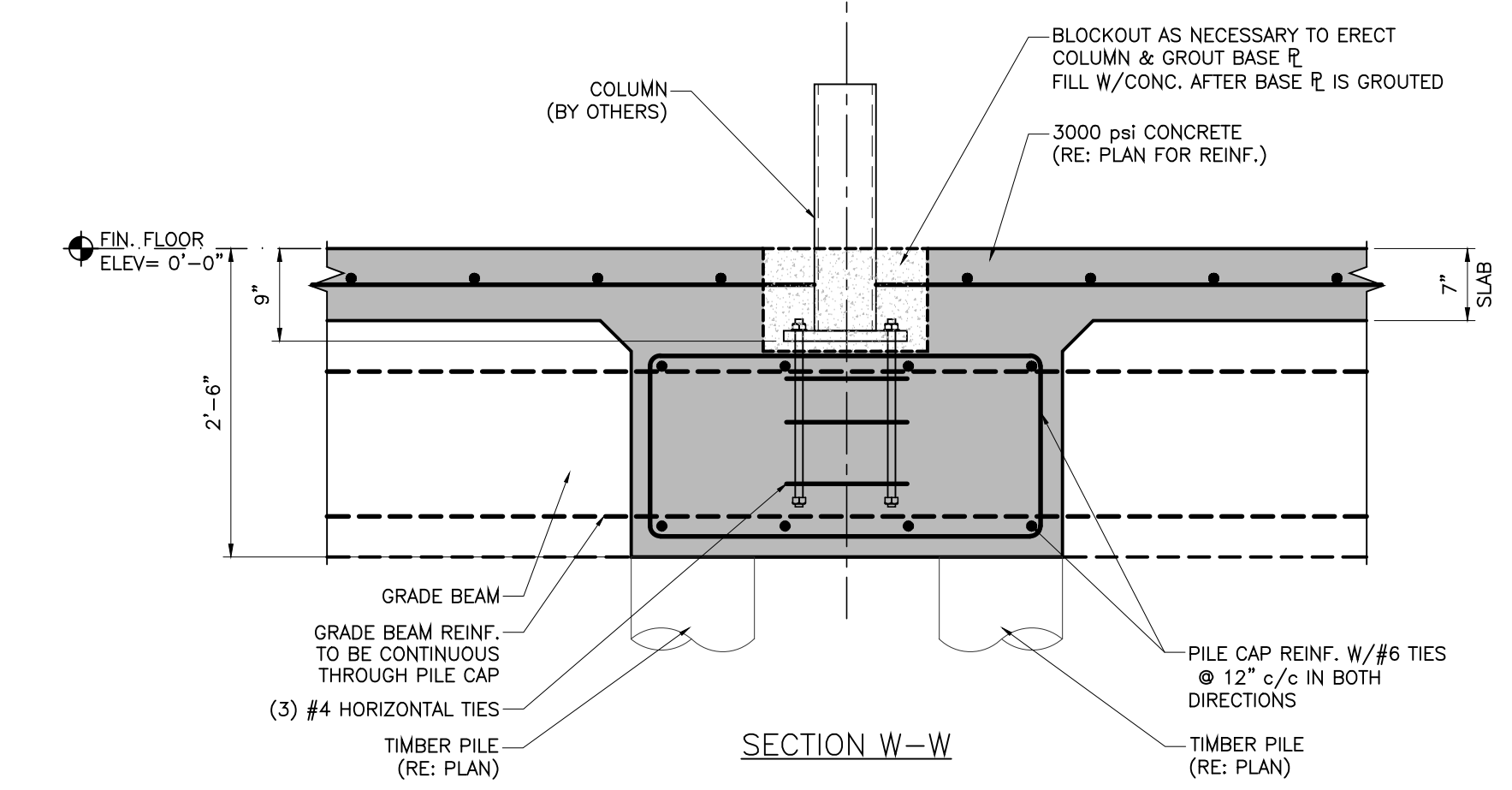
2 PILE CAP TYPE 2 DETAIL
SCALE: 3/4" = 1'-0"



3 COLUMN PEDESTAL DETAIL
SCALE: 3/4" = 1'-0"



4 COLUMN PEDESTAL DETAIL
SCALE: 3/4" = 1'-0"



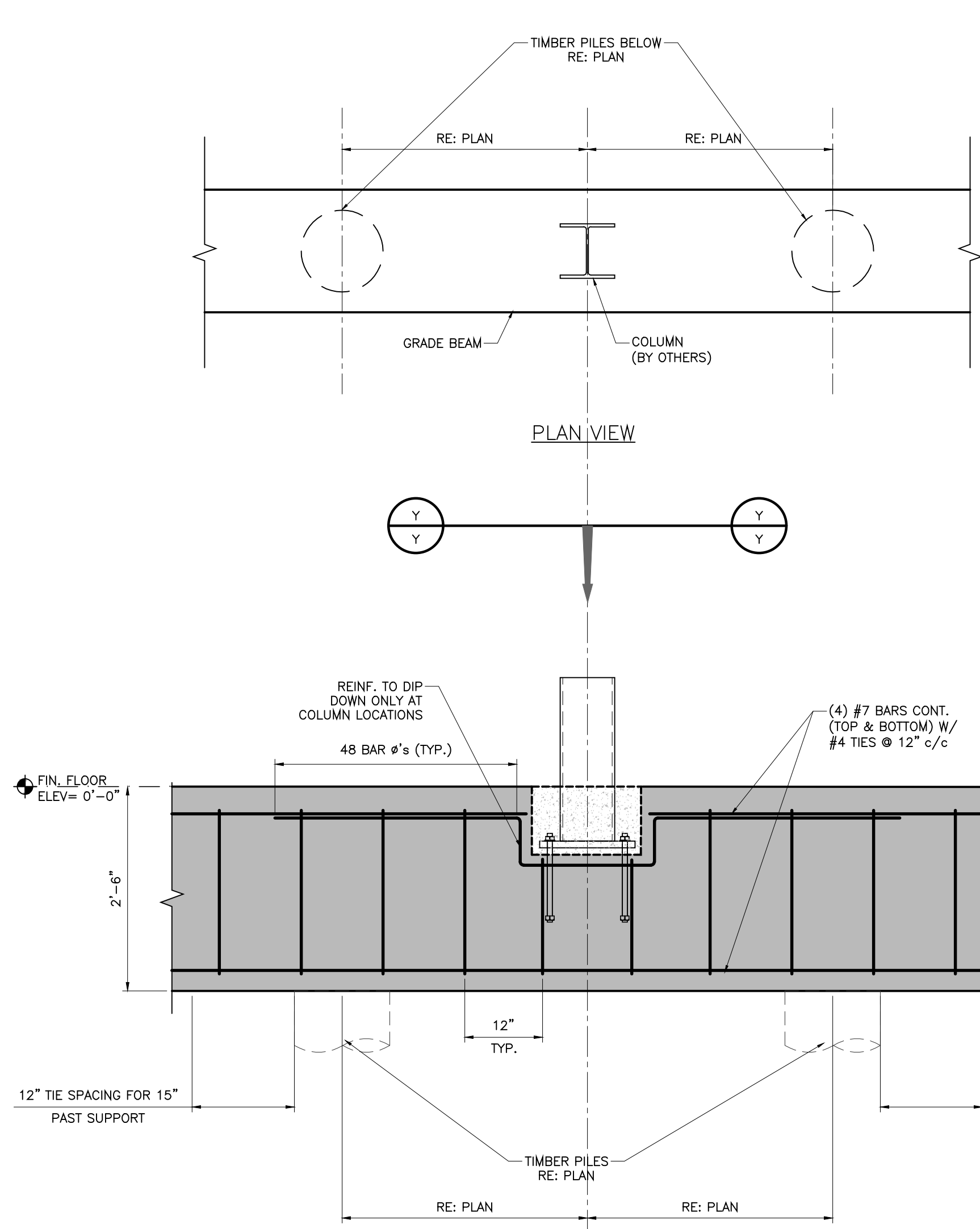
DUHON + PLEASANT
CIVIL & STRUCTURAL ENGINEERS
337 564 9918 5393 BIG LAKE ROAD
D&P PROJECT # 19-001 LAKE CHARLES LA 70605
JASON@DANDPENGINEERS.COM JUNE 2019

KUDLA ARCHITECTURE
429 Kirby Street
Lake Charles, LA 70601
p: 337.436.3650
f: 337.436.3655
www.kudlaarchitect.com
©2016 copyright kudla architecture llc
Drawings and Specifications are instruments of service and are not to be used for other projects or purposes without the project except by agreement in writing and with appropriate compensation to the Architect. Contractor is responsible for confirming and correcting dimensions at job site. The Architect will not be responsible for construction means, methods, techniques, sequences or procedures or for safety precautions and programs in connection with the project.

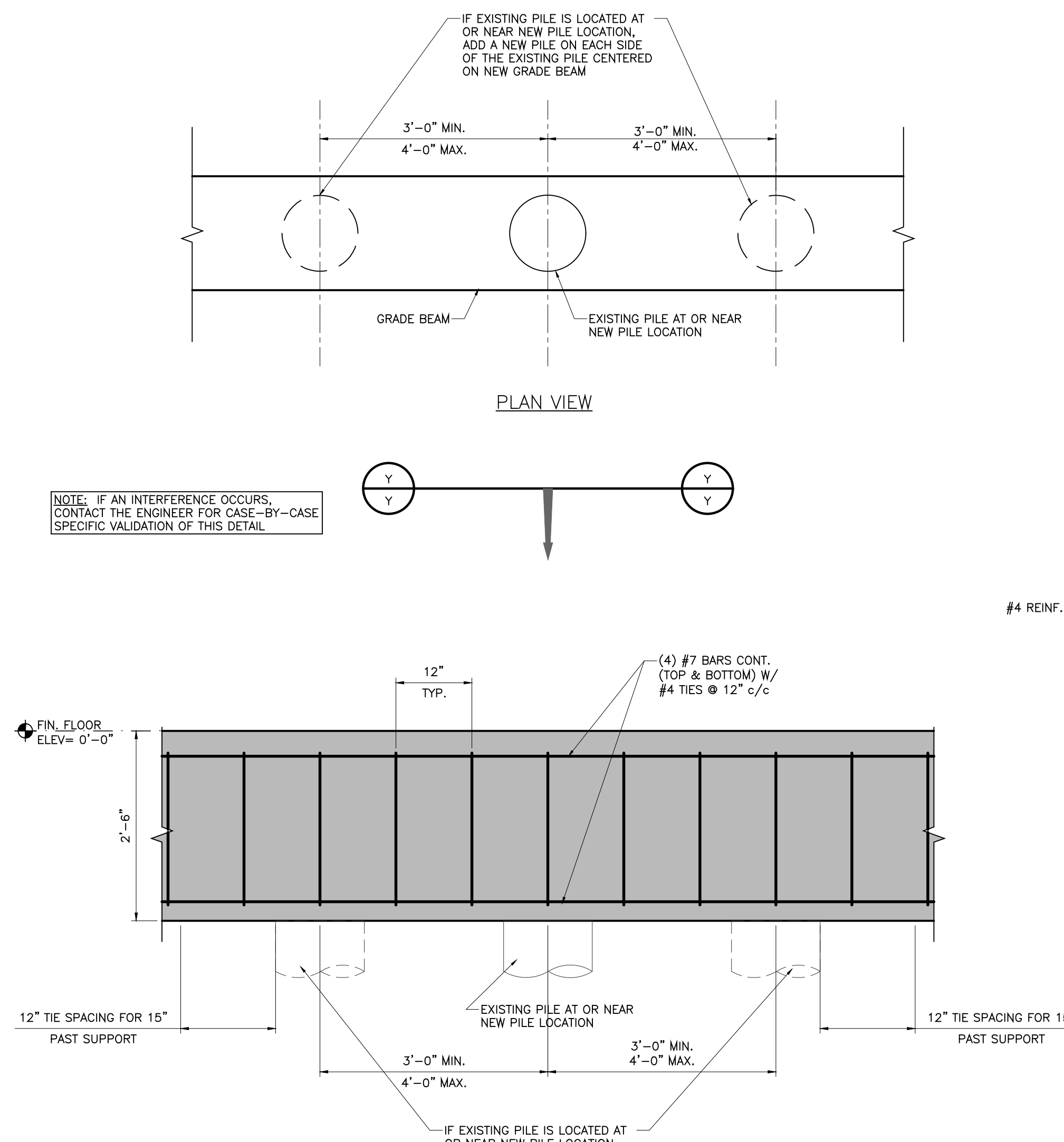
A Business Office for:
Dunham Price Group
210 Mike Hooks Road
Calcasieu Parish
Westlake, La. 70669

stamp:
JASON DUHON
License No. 18551
Professional Engineer
06/06/2019
phase:
For Construction
Construction Bid Documents
project #: **1907**
date issued: 06-06-19
drawn by: khe
checked by: jd
revisions:

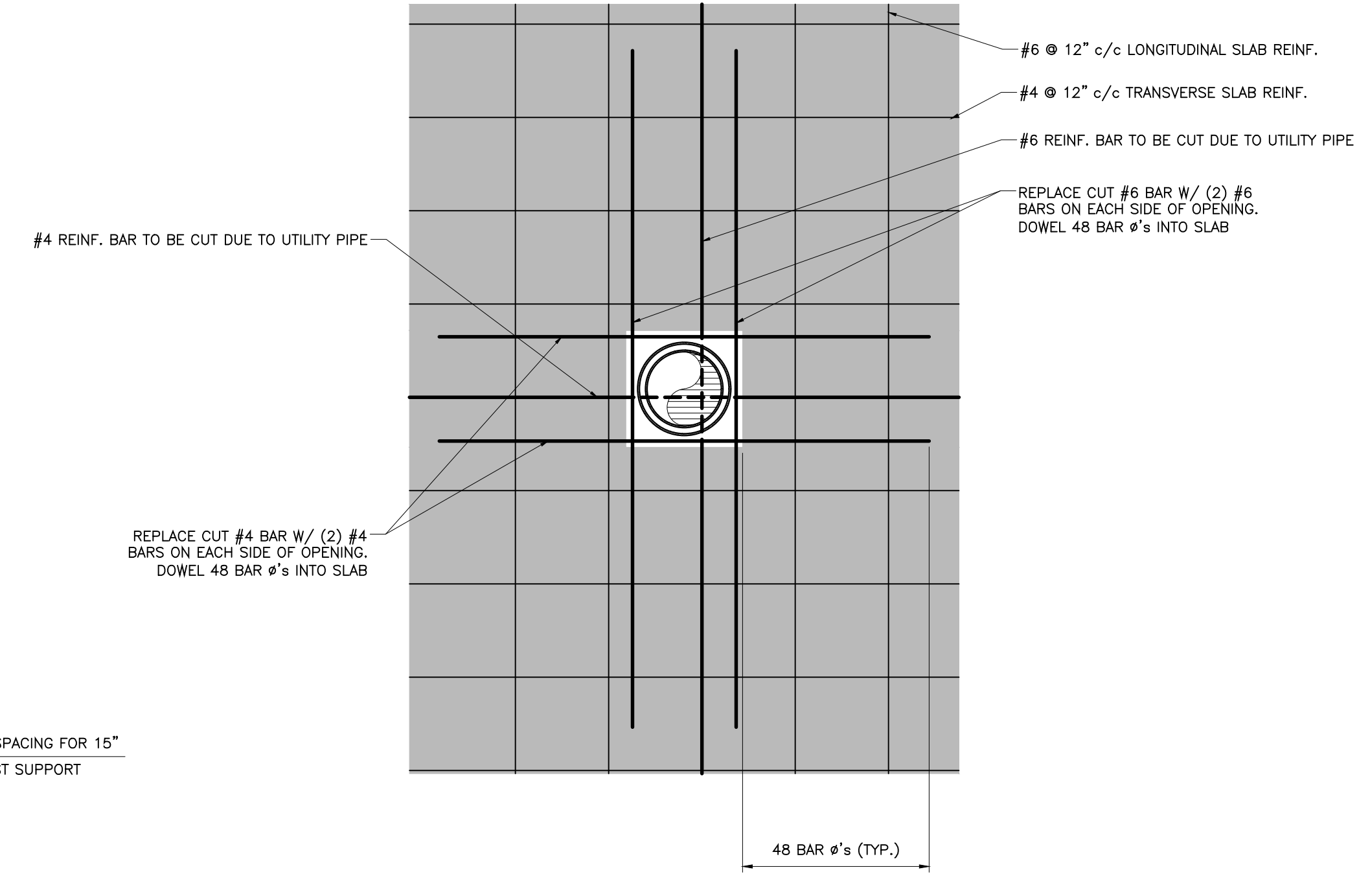
S 1.1



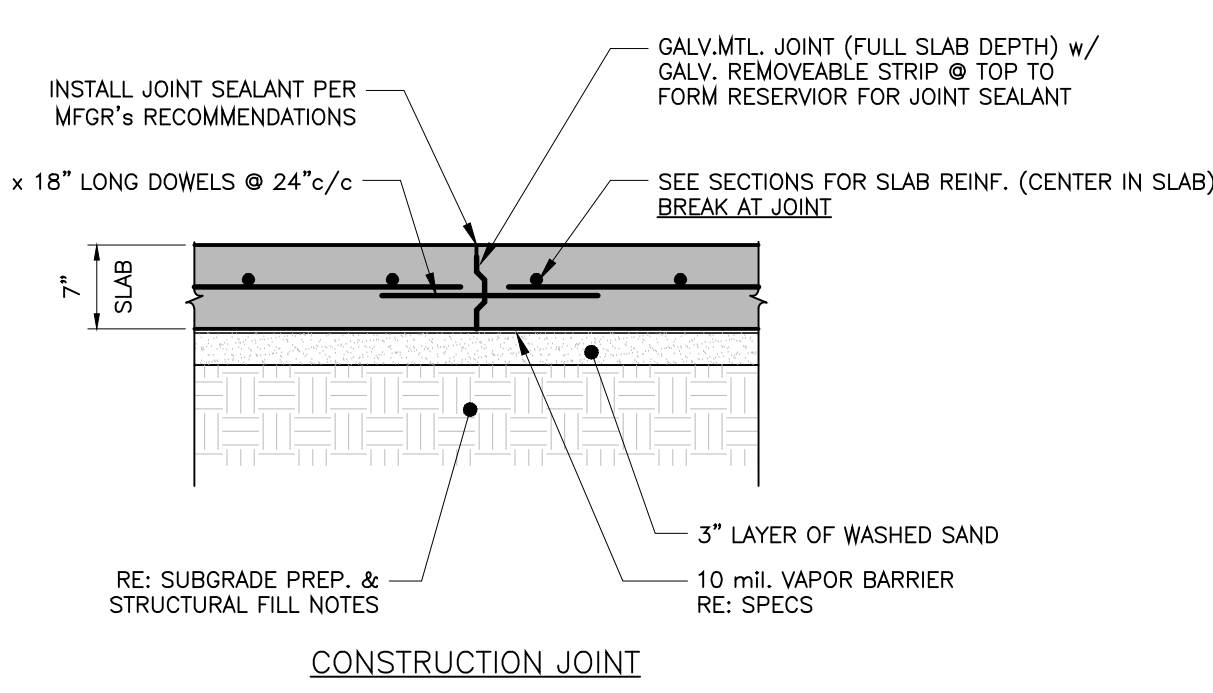
1 TYPICAL COLUMN BETWEEN TWO PILES DETAIL
SCALE: 3/4" = 1'-0"



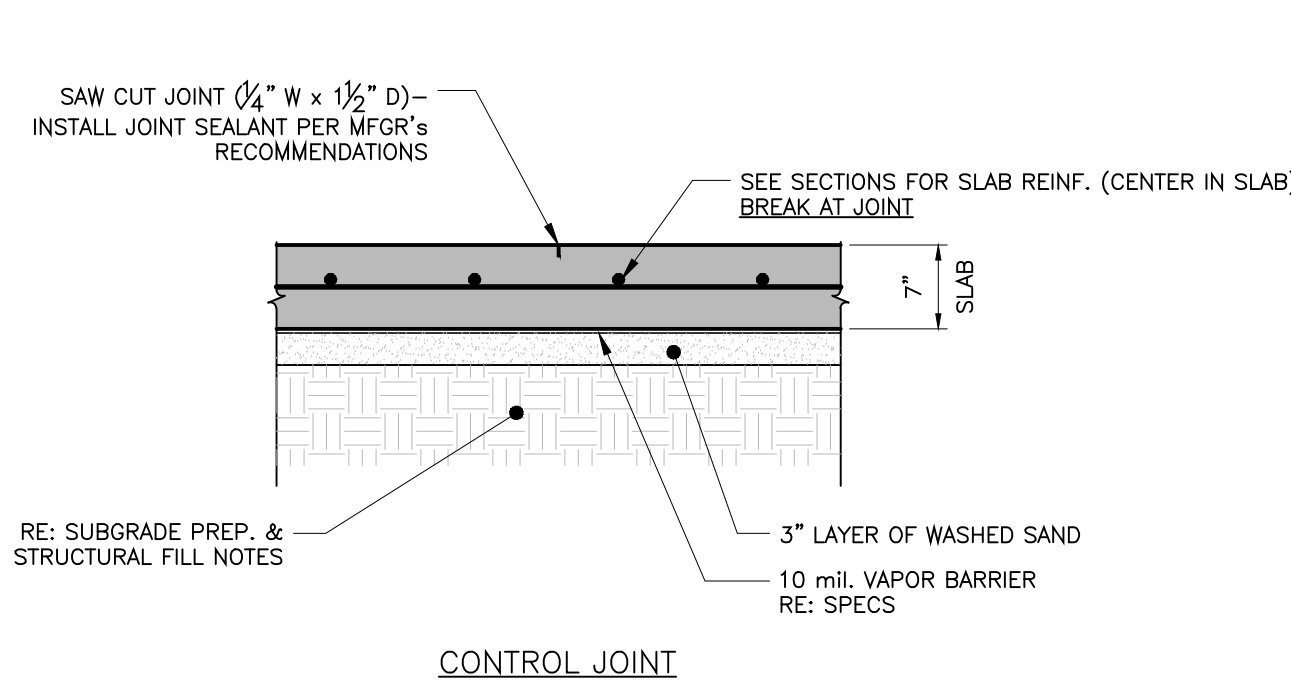
2 EXISTING PILE INTERFERENCE DETAIL
SCALE: 3/4" = 1'-0"



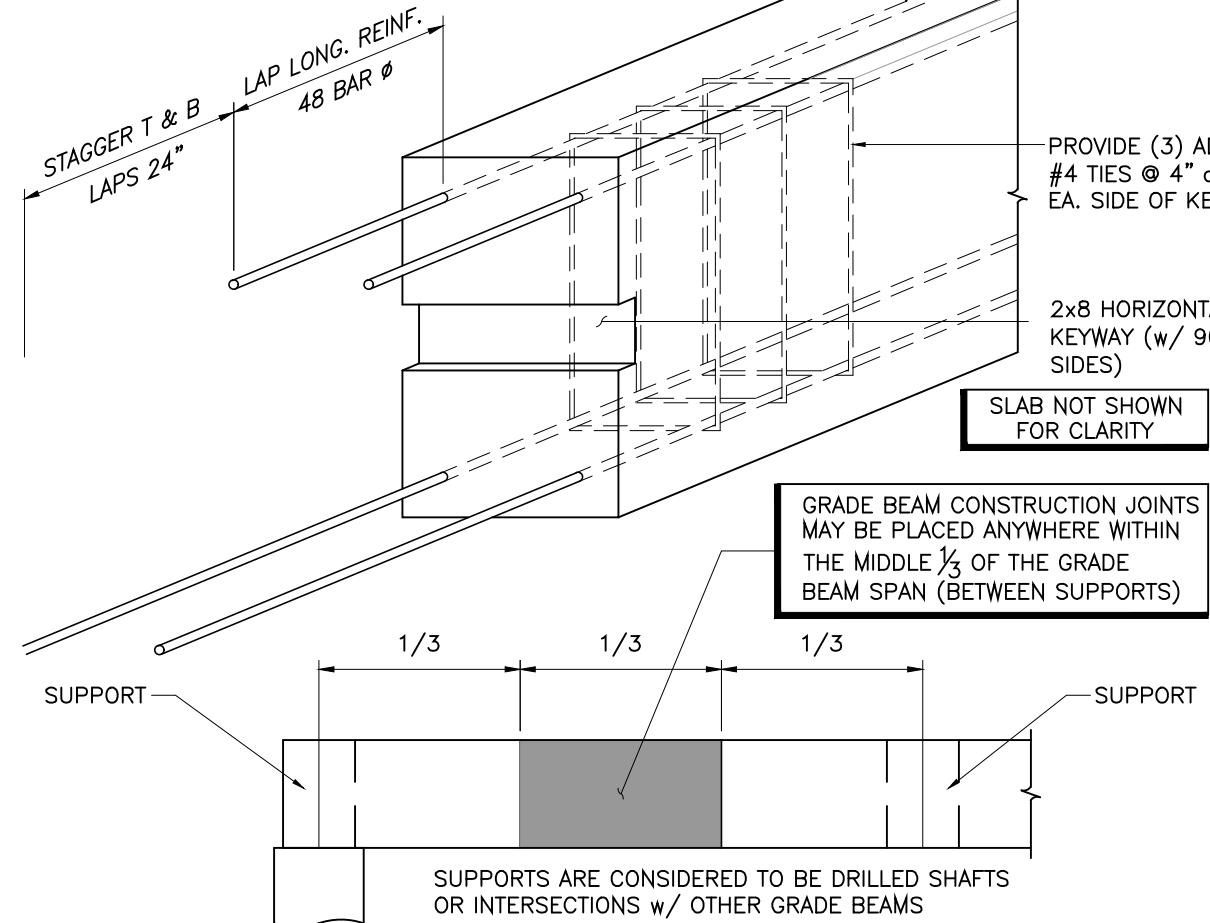
3 PIPE THRU STRUCTURAL SLAB DETAIL
SCALE: 3/4" = 1'-0"



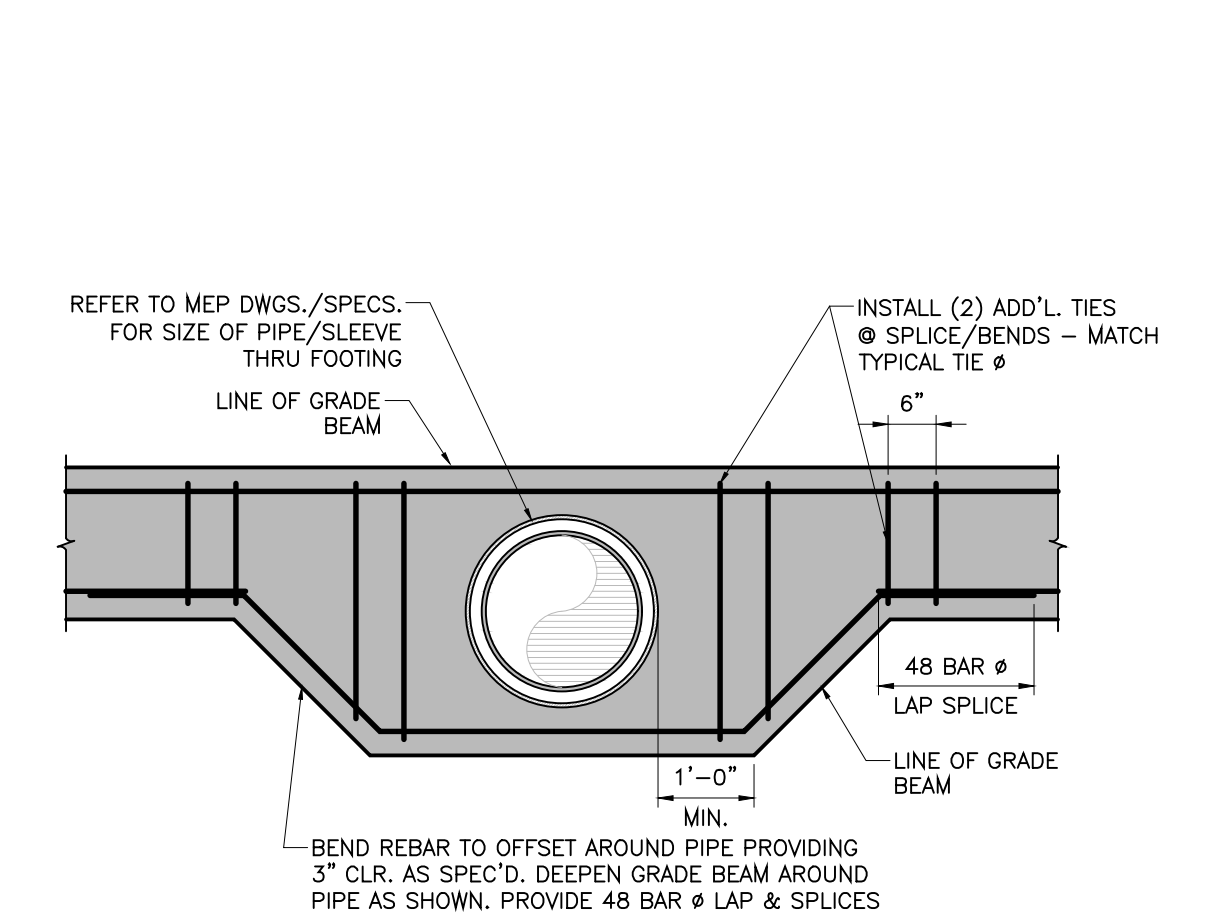
4 TYP. SLAB CONSTRUCTION JOINT DETAIL
SCALE: 3/4" = 1'-0"



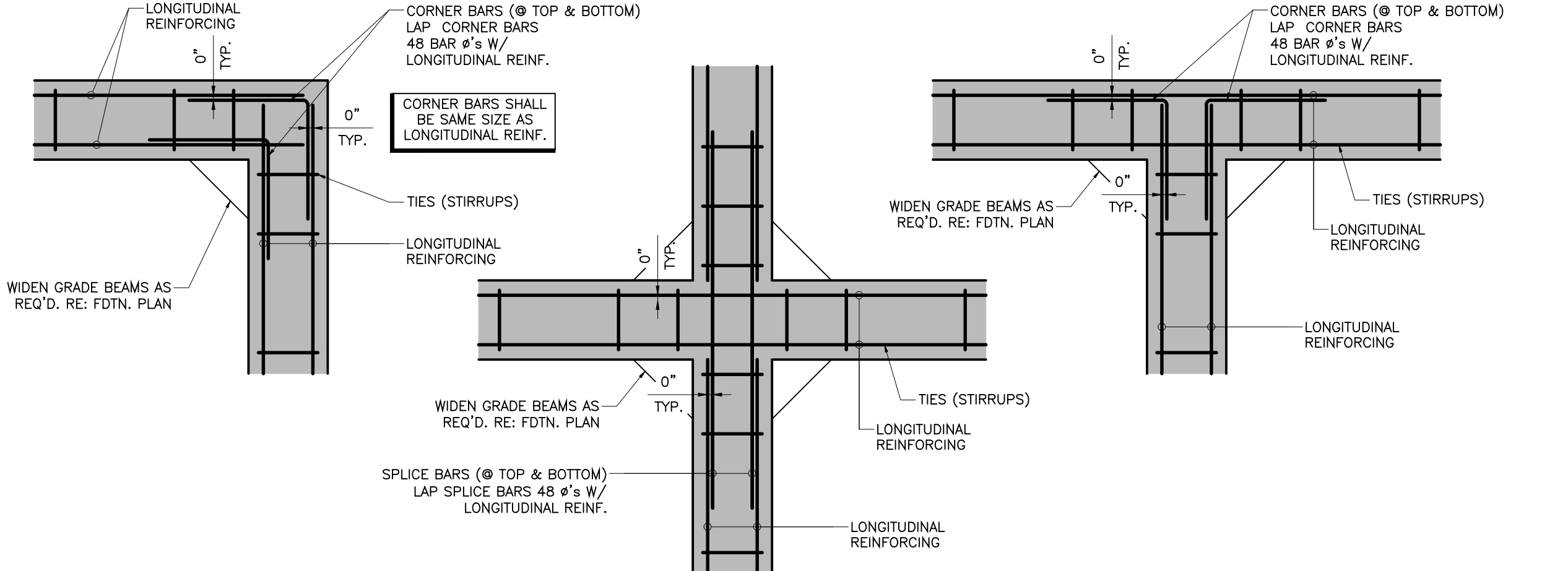
5 TYP. SLAB CONTROL JOINT DETAIL
SCALE: 3/4" = 1'-0"



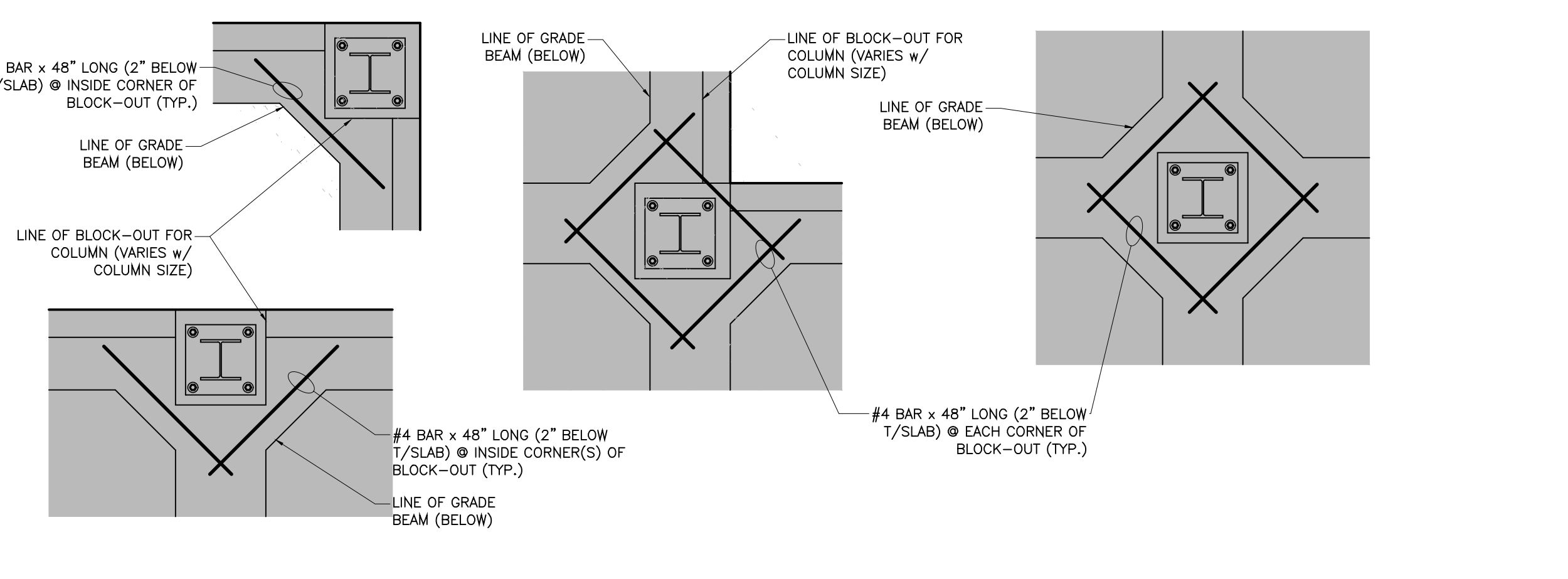
6 GRADE BEAM CONSTRUCTION JOINT DETAIL
SCALE: 3/4" = 1'-0"



7 PIPE THRU GRADE BEAM DETAIL
SCALE: 3/4" = 1'-0"



8 TYPICAL GRADE BEAM INTERSECTION DETAILS
SCALE: 1/2" = 1'-0"



9 COLUMN BLOCKOUT REINFORCE DETAIL
SCALE: 1/2" = 1'-0"

GENERAL NOTES

- THE FOLLOWING APPLY TO ALL STRUCTURAL DRAWINGS.
- ALL DESIGN AND CONSTRUCTION IS BASED ON AND SHALL BE IN ACCORDANCE WITH THE INTERNATIONAL BUILDING CODE 2015 EDITION AND APPLICABLE LOCAL CODES.
- THE GENERAL CONTRACTOR SHALL VERIFY ALL DIMENSIONS AND SITE CONDITIONS AND NOTIFY ARCHITECT OF ANY DISCREPANCIES PRIOR TO PROCEEDING WITH WORK. FOR DIMENSIONS NOT SHOWN ON STRUCTURAL DRAWINGS, REFER TO ARCHITECTURAL DRAWINGS.
- THE STRUCTURE SHOWN ON THESE DRAWINGS IS SELF-SUPPORTING ONLY IN ITS COMPLETED FORM. THE CONTRACTOR SHALL BE RESPONSIBLE FOR PROVIDING THE DESIGN, ADEQUACY, SAFETY, AND STABILITY OF TEMPORARY ERECTION BRACING AND SHORING.
- UNLESS NOTED, ELEVATIONS SHOWN ARE TO TOP OF FOUNDATIONS, SLABS OR STEEL BEAMS.
- THE CONTRACTOR SHALL BE RESPONSIBLE FOR MEANS, METHODS, TECHNIQUES, SEQUENCES, AND PROCEDURES IN ORDER TO COMPLY WITH THE CONTRACT DRAWINGS AND SPECIFICATIONS.
- DO NOT SCALE DRAWINGS. USE ANNOTATED DIMENSIONS AS PROVIDED. NOTIFY ARCHITECT OF ANY DISCREPANCIES FOR CLARIFICATION.

SUBGRADE PREPARATION AND LIGHTWEIGHT FILL

SUBGRADE PREPARATION AND STRUCTURAL FILL NOTES BASED ON RECOMMENDATIONS CONTAINED IN GEOTECHNICAL REPORT (NO. 19-004, DATED 28 FEBRUARY 2019) AS PREPARED BY DANIEL J. HOLDER, P.E., INC., LAKE CHARLES, LOUISIANA AS DIRECTED FOR USE BY THE ARCHITECT.

THE FOLLOWING NOTES UNDER "SUBGRADE PREPARATION AND LIGHTWEIGHT FILL" SHALL PERTAIN TO ANY ADDITIONAL SUCH ACTIVITIES AS REQUIRED IN THE STRUCTURAL PORTION OF THE CONSTRUCTION DOCUMENTS.

- CONTRACTOR SHALL BE RESPONSIBLE FOR CONTACTING LA ONE CALL TO IDENTIFY ALL UTILITIES PRIOR TO COMMENCEMENT OF ANY CONSTRUCTION ACTIVITIES.
- CONTRACTOR TO LOCATE ALL UTILITIES AND VERIFY NO CONFLICTS EXIST WITH ANY PROPOSED STORMWATER AND/OR UTILITY ROUTING PRIOR TO COMMENCEMENT OF ANY CONSTRUCTION ACTIVITIES.
- IF ANY CONFLICTS ARE IDENTIFIED THE CONTRACTOR SHALL NOTIFY THE ARCHITECT FOR RESOLUTION PRIOR TO COMMENCEMENT OF CONSTRUCTION.
- FOR TREES TO BE REMOVED IMMEDIATELY UNDER BUILDING PAD AND 5 FEET OUTSIDE OF BUILDING LINE THE ENTIRE TREE SHALL BE REMOVED INCLUDING THE ROOT BALL AND BACKFILL WITH STRUCTURAL FILL PER INSTALLATION DIRECTIONS BELOW.
- DISPOSE OF ALL EXISTING SOILS/VEGETATION PER OWNER'S DIRECTIVE ACCORDING TO FEDERAL, STATE, AND LOCAL REGULATIONS.
- AFTER ALL MATERIALS HAVE BEEN REMOVED TO THE PROPER SUBGRADE ELEVATION, THE CONTRACTOR SHALL PROOF ROLL THE SUBGRADE WITH A LOADED DUMP TRUCK. ANY SUBGRADE FAILURES, "SOFT SPOTS", SHALL BE REMOVED AND REPLACED WITH LIGHTWEIGHT FILL/GEOFAM (REFER TO GEOTECHNICAL REPORT).
- CONTRACTOR IS TO MAINTAIN DRAINAGE PATHS TO SHED RUNOFF AWAY FROM ALL STRUCTURAL FILL AREAS UNTIL THEY ARE COMPLETED.
- CONTRACTOR TO REFER TO GEOTECHNICAL REPORT (PAGE 6/PARAGRAPH 2 & 3) FOR FILL REQUIREMENTS & LIMITATIONS.

CONCRETE

- ALL CONCRETE DESIGN AND CONSTRUCTION SHALL BE IN ACCORDANCE WITH ACI 318 AND ACI 301 (LATEST EDITION).
- CONCRETE SHALL DEVELOP A MINIMUM 28 DAY COMPRESSIVE STRENGTH OF 3000 PSI.
- UNLESS OTHERWISE NOTED, CONCRETE COVER FOR REINFORCING STEEL SHALL BE 3".
- NO ADDITIONAL WATER SHALL BE ADDED TO THE CONCRETE AT THE JOB SITE.

REINFORCING STEEL

- REINFORCING STEEL AND ACCESSORIES SHALL BE DETAILED IN ACCORDANCE WITH ACI 315 (MANUAL OF STANDARD PRACTICE FOR DETAILING REINFORCED CONCRETE STRUCTURES) AND CRSI MSP-1 (MANUAL OF STANDARD PRACTICE), LATEST EDITIONS.
- REINFORCING STEEL SHALL CONFORM TO ASTM A 615, GRADE 60 (UNLESS NOTED).
- ALL WELDED REINFORCING STEEL SHALL CONFORM TO ASTM A 706 AND BE USED ONLY WITH PRIOR PERMISSION FROM THE STRUCTURAL ENGINEER.
- ALL SPLICES, INCLUDING SPLICES FROM BARS LABELED CONTINUOUS, SHALL BE 48 BAR DIAMETERS.
- LONGITUDINAL REINFORCING BARS IN FOOTINGS SHALL BE PLACED CONTINUOUS AT CORNERS AND THROUGH INTERSECTIONS BY MEANS OF CORNER BARS AND/OR SPLICE BARS.
- FOR EVERY VERTICAL OR HORIZONTAL BAR DISCONTINUED BY AN OPENING, ONE BAR (MIN. OF 2 BARS) SHALL BE ADDED AT SIDE OF OPENING (SUPPORTED TO EACH SIDE - TYPICAL).
- CONCRETE REINFORCING STEEL SHALL BE SUPPORTED AT SPECIFIED POSITION BY CONCRETE BLOCKS, CHAIRS, OR OTHER PRODUCTS MANUFACTURED SPECIFICALLY FOR THAT PURPOSE. REINFORCING SUPPORTS SHALL BE PLACED NOT MORE THAN 4'-0" ON CENTER.

SHALLOW FOUNDATIONS (GRADE BEAMS)

- DO NOT CUT GRADE BEAM OR SLAB REINFORCEMENT WHEN INSTALLING MECH./ELEC. FIXTURES. REINFORCEMENT TO REMAIN CONTINUOUS.

SLAB

- CONCRETE SLAB "CONTROL JOINTS" WHICH SHALL BE SAWCUT. REFER TO TYPICAL DETAIL ON S1.2. MAXIMUM SPACING OF INTERIOR SLAB CONTROL JOINTS, UNLESS OTHERWISE NOTED, SHALL BE 20'-0" (MAX.) IN EACH DIRECTION. CONTRACTOR MUST SUBMIT A CONTROL JOINT LAYOUT FOR APPROVAL (7) WORKING DAYS PRIOR TO POURING SLAB. RE: SPEC. SECTION "033000 - CAST-IN-PLACE CONCRETE".
- SLAB CONSTRUCTION JOINTS SHALL BE USED IN PLACE OF CONTROL JOINTS WHERE NEEDED TO INTERRUPT A CONTINUOUS POUR. SLAB CONSTRUCTION JOINTS SHALL BE OF KEYED TYPE. ALL CONSTRUCTION JOINT LOCATIONS TO BE SUBMITTED TO ENGINEER FOR REVIEW & APPROVAL PRIOR TO FORMWORK IF ALLOWABLE.
- PLACEMENT OF REINFORCEMENT IN SLAB, WHERE NOT SPECIFIED, SHALL BE IN CENTER OF SLAB.
- REFER TO ARCHITECTURAL AND/OR MEP DRAWINGS FOR ADDITIONAL SLAB FINISHES, LEVEL LANDINGS, SLAB DEPRESSIONS, ELEVATIONS, BRICK LEDGES AND ENCASED OR EMBEDDED ITEMS.
- PLUMBING AND ELECTRICAL CONDUITS SHALL BE PLACED BELOW THE SLAB AND NOT WITHIN THE SLAB. VERTICAL PENETRATIONS ARE ALLOWED.

KUDLA ARCHITECTURE

429 Kirby Street
Lake Charles, LA 70601
p: 337.436.3650
f: 337.436.3655
www.kudlaarchitect.com

©2016 copyright kudla architecture llc

Drawings and Specifications are instruments of service and shall remain the property of the Architect. They are not to be used for other projects or reproduced in any form without the written consent of the Architect. Contractor is responsible for confirming and correcting dimensions at job site. The Architect will not be responsible for construction means, methods, techniques, sequences or procedures or for safety precautions and programs in connection with the project.

A Business Office for:
Dunham Price Group

210 Mike Hooks Road
Calcasieu Parish
Westlake, La. 70669

stamp:

phase:
For Construction
Construction Bid Documents

project #: **1907**

date issued: 06-06-19
drawn by: khe
checked by: jd
revisions:

FOUNDATION DETAILS

S 1.2

DUHON + PLEASANT
CIVIL & STRUCTURAL ENGINEERS
337 564 9918 5393 BIG LAKE ROAD
D&P PROJECT # 19-001 LAKE CHARLES LA 70605
JASON@DANDPENGINEERS.COM JUNE 2019